



MArch.

George van Luit

Bladhaantje 15
1562MB Krommenie

T : 075-622 72 77

F : 075-622 72 78

M : 06-53 29 14 84

E : info@georgevanluit.nl

ARCHITECTUUR

George van Luit

Born in Krommenie the Netherlands. Studied architecture on the Amsterdam Academy and graduated Master's Degree in 2005, from 1989 gained experience at several offices as Takenaka and DENC architects and has all the knowledge to realise projects from beginning to end.

The final result comes step by step in a narrow combined action of constituent, user and architect. A pleasant process is the source for creativity.



ARCHITECT

PHILIPS ROOSENDAAL

Office extension at the forwarding of Philips lighting at Roosendaal. The office building stands as a loose element against existing forwarding. This is reinforced by persevering the horizontal plinth vertically between existing forwarding and new office. This vertical plinth is the horizontal office transport area.



OFFICE PHILIPS

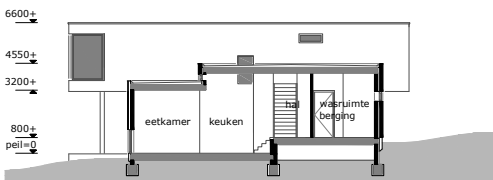
DECEMBER 2005

IN THE NOORDZOOM

To the North-West side of Lelystad, in the extension of the connection on the Markerwaarddijk, a real landgarden will arise. Land waves in the area with unevennesses and changing views.

The unevennesses as well as the changing views stipulate the position of the three different volumes from which the house has been built.

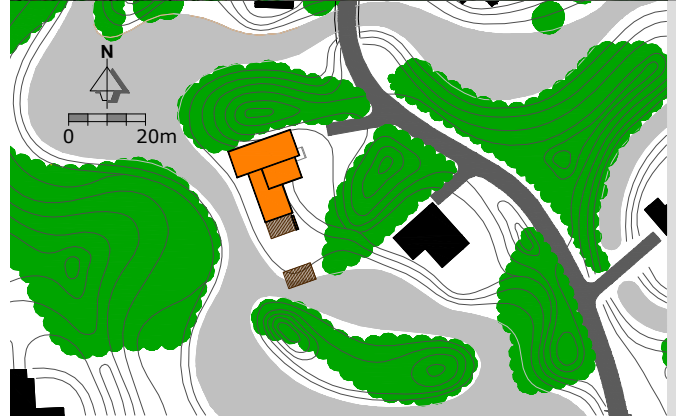
(Live, sleep and the link between both the entrance and vertical transport)



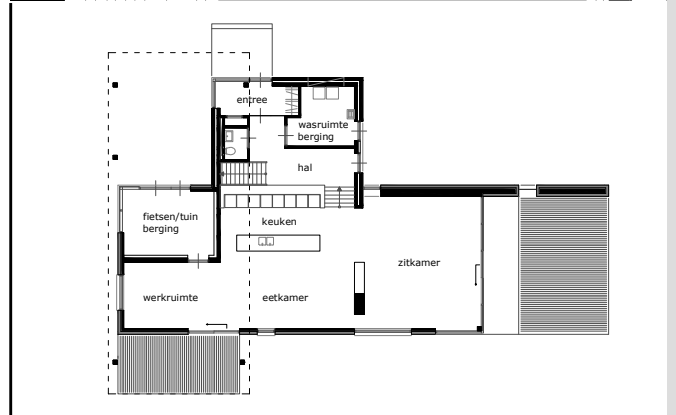
SECTION



VILLA IN THE NOORDZOOM



SITE



FLOOR PLAN

DESIGN: JANUARI 2006

SERVICE POINT LOVEN

The company area praises what in the sixties is laid-out a new pulse gets it give a service point with supplies such as business centre on the committed ground, trendy restaurant on first deepening, convention space, luxuriously offices, etc..

The building has the irradiation of a pavilion with sculptural form, it is this way the pearl of the industry area.



SERVICE POINT TILBURG

JULI 2006

IND. TERREIN LORENTZ

A business centre offer space to companies from several branches. This activity to withdraw of the street picture for this reason has the building the form of a needling iron. (so arises there a small estate) the building concludes himself to the side and the back of its surroundings.

The head Units are a passage from outside and inside into the street.

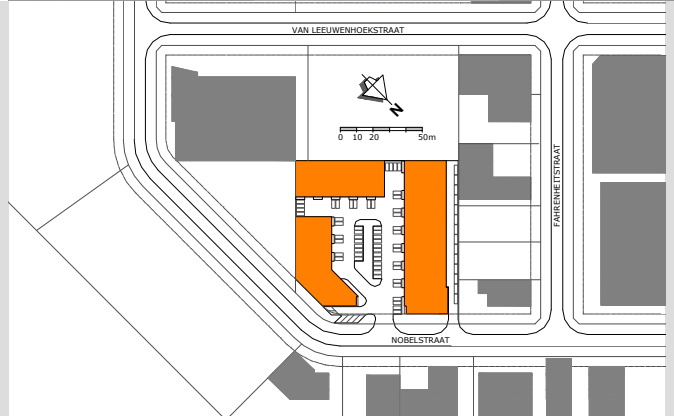
Units varies of approximately 54m² up to approximately 531m².



FLOORPLAN



TRADE CENTER
HARDERWIJK



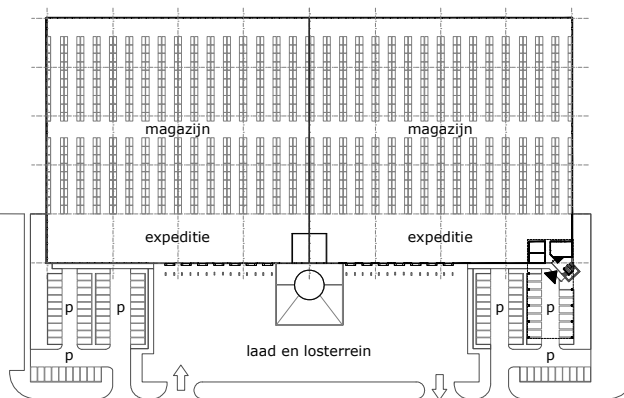
SITE

DESIGN:
APRIL 2005

DC KRAAIVEN TILBURG

A distribution centre for rise and transhipment of high quality products with motorway connection with and from the Grootvenstraat. To give a view from the Grootvenstraat on the loading area the office have been lifted, below arises this way necessary parking space..

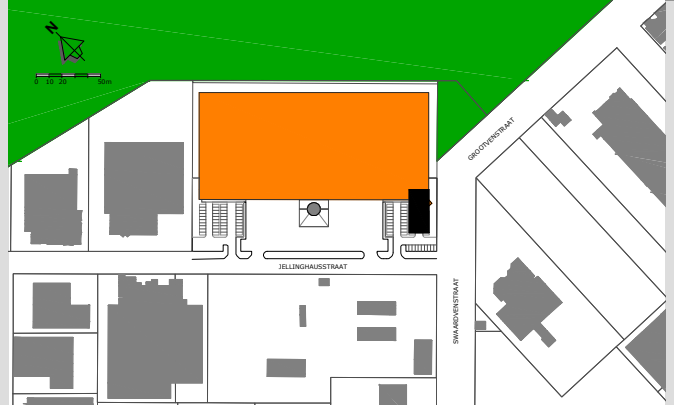
Main stairs and lift of the office stand in the direction and the heart of the Grootvenstraat.



FLOORPLAN



DC TILBURG



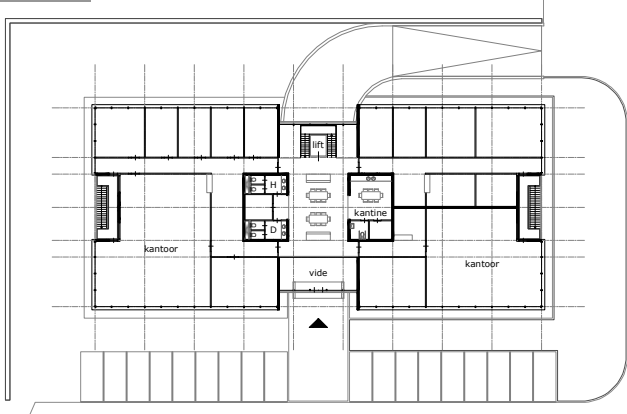
SITE

DESIGN:
SEPTEMBER 2004

BUTTERFLY OISTERWIJK

An office collecting building on the former courts of tennis association "Sla raak" lettuce home in Oisterwijk. Office space with a variety of rentable space.

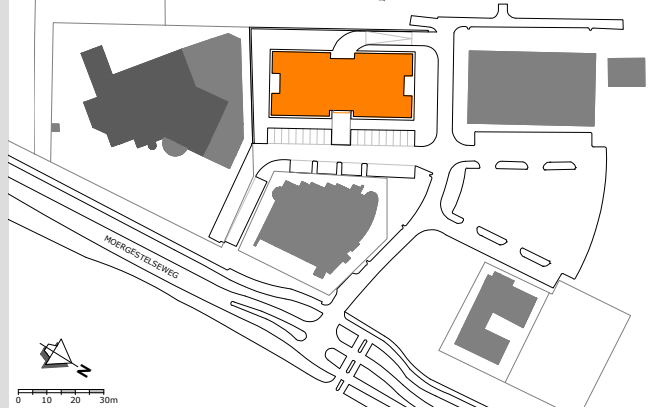
In the pin of the building collective facilities as toilets, entrance and canteen are for common use general reduce costs, but especially stimulate exchange.



FLOORPLAN



BUSINESS CENTRE
OISTERWIJK



SITE

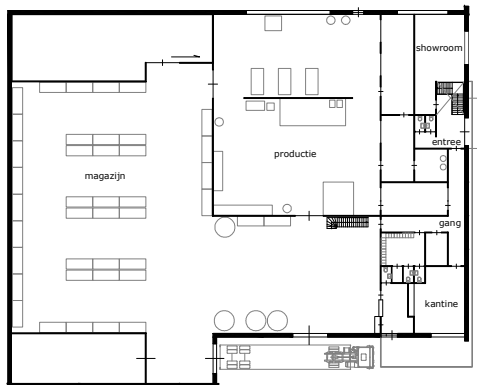
OCTOBER 2006

IND. AREA MEERPAAL

Een bedrijfsgebouw waar de verschillende bedrijfsactiviteiten zijn af te lezen. Magazijn en productie volume aan de achterzijde waar laden en lossen de gevel openen.

Kantoorvolume op hoogte presenteert het bedrijf.

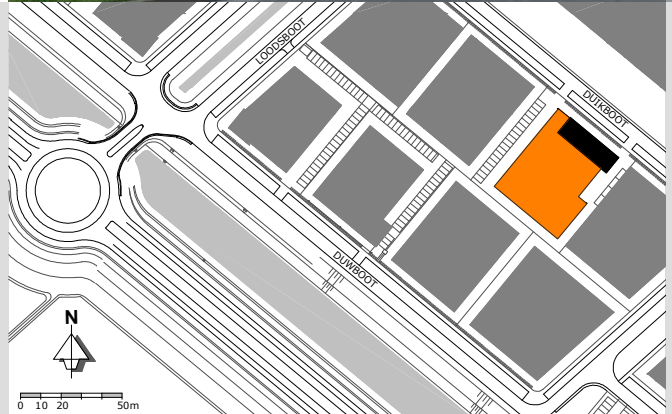
Onder het kantoor zijn de functies ondergebracht die een relatie hebben met de productie als een laboratorium en de kwaliteitscontrole.



FLOORPLAN



EPI HOUTEN



SITE

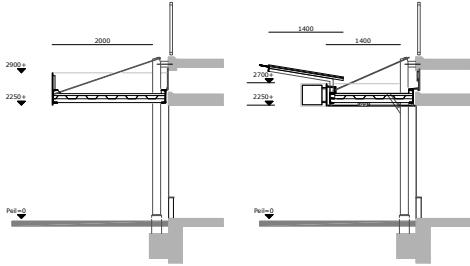
JULI 2005

SHOPS BADHOEVEDORP

New canopies for the shops on the Sloterweg and the Lorentzplein. The existing closed canopy has been shortened and extends with a transparency part to maintain this way the course area.

Base has been now finished with a flat ceiling including lights. Uniform publicity advertising for the shops.

Entrance color lights for the houses gives recognition in the evening.



EXISTING

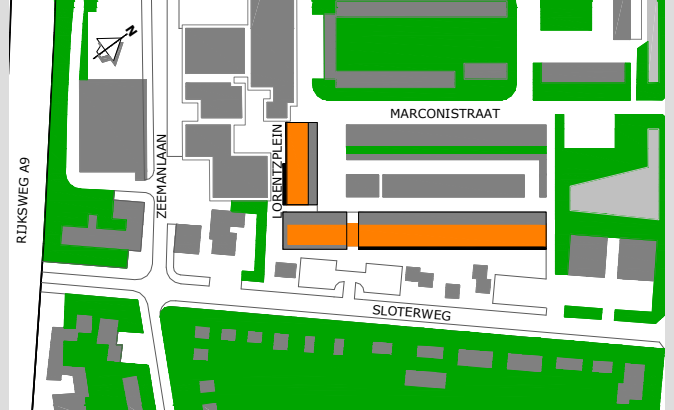
NEW



SECTIONS



CANOPIES
BADHOEVEDORP



SITE



NEW

EXISTING

DESIGN:
NOVEMBER 2005

RETAILPARK OOSTERHOUT

Redevelopment of a car transshipment area of 150.000m². an area with optimum opening-up concerning the way by means of A27 or A59, concerning water and concerning the track. Stretched between heavy industry to the port side and retail to the housing side.

The plan is mix of retail, large-scale retail, wholesale trade and industry. Transparent design at retail as showrooms and closed design at industry.



RETAILPARK
OOSTERHOUT

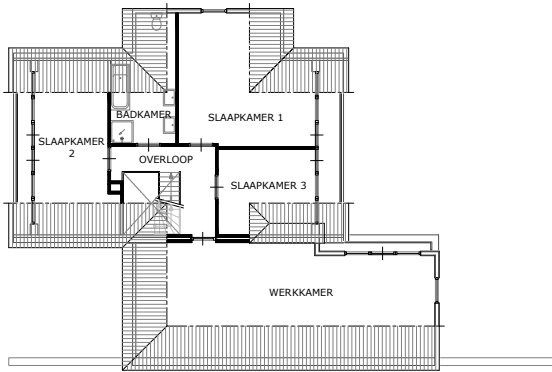
OPLEVERING:
SEPTEMBER 2004

ZAAANSE WONING

Assendelft kenmerkend door de langste Dorpstraat met een lengte van 8 kilometer. Lint bebouwing met uitzicht over de weilanden die strekken van Beverwijk tot Amsterdam.

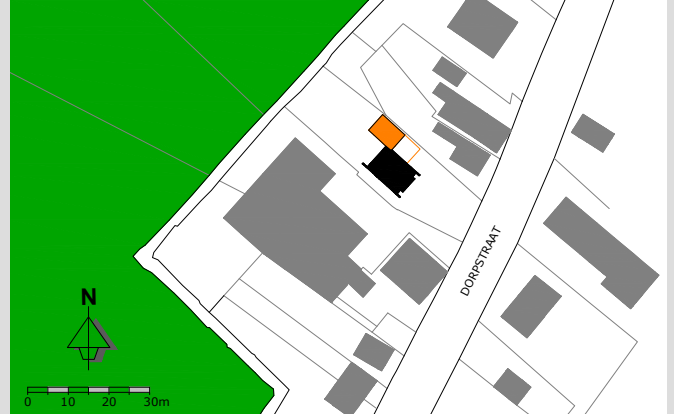
De nieuwe werkkamer geeft een ruime blik over de eigen tuin en de weilanden.

Herkenbare elementen als de loggia en het dakoverstek, bepalen de keuze om met een gelijke wijze de aanbouw te schakelen.



AANBOUW ASSENDELF

PLATTEGROND



SITUATIE

BOUWAANVRAAG:
MAART 2006

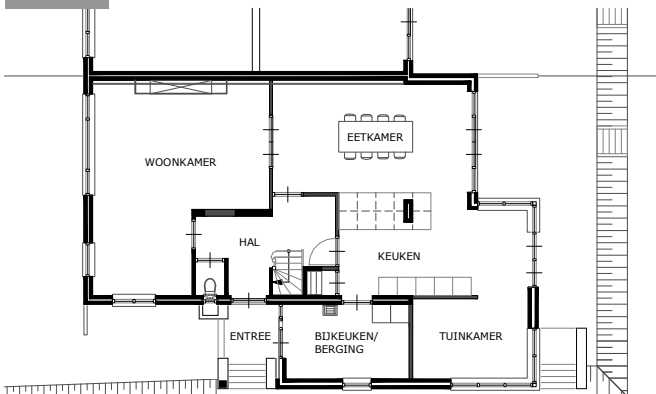
AANBOUW NAARDEN

Het bestaande ontwerp is van de Arnhemse architect G. Feenstra omstreeks 1935.

Kenmerkend van deze tijd zijn de grote dakoverstekken. Dit is ook terug te vinden in de aanbouw.

De entree wordt gemarkeerd door het dak door te trekken tot over de voordeur.

De aanbouw breekt het talud door de trappen aan weerszijden van de aanbouw.



AANBOUW NAARDEN

PLATTEGROND



SITUATIE